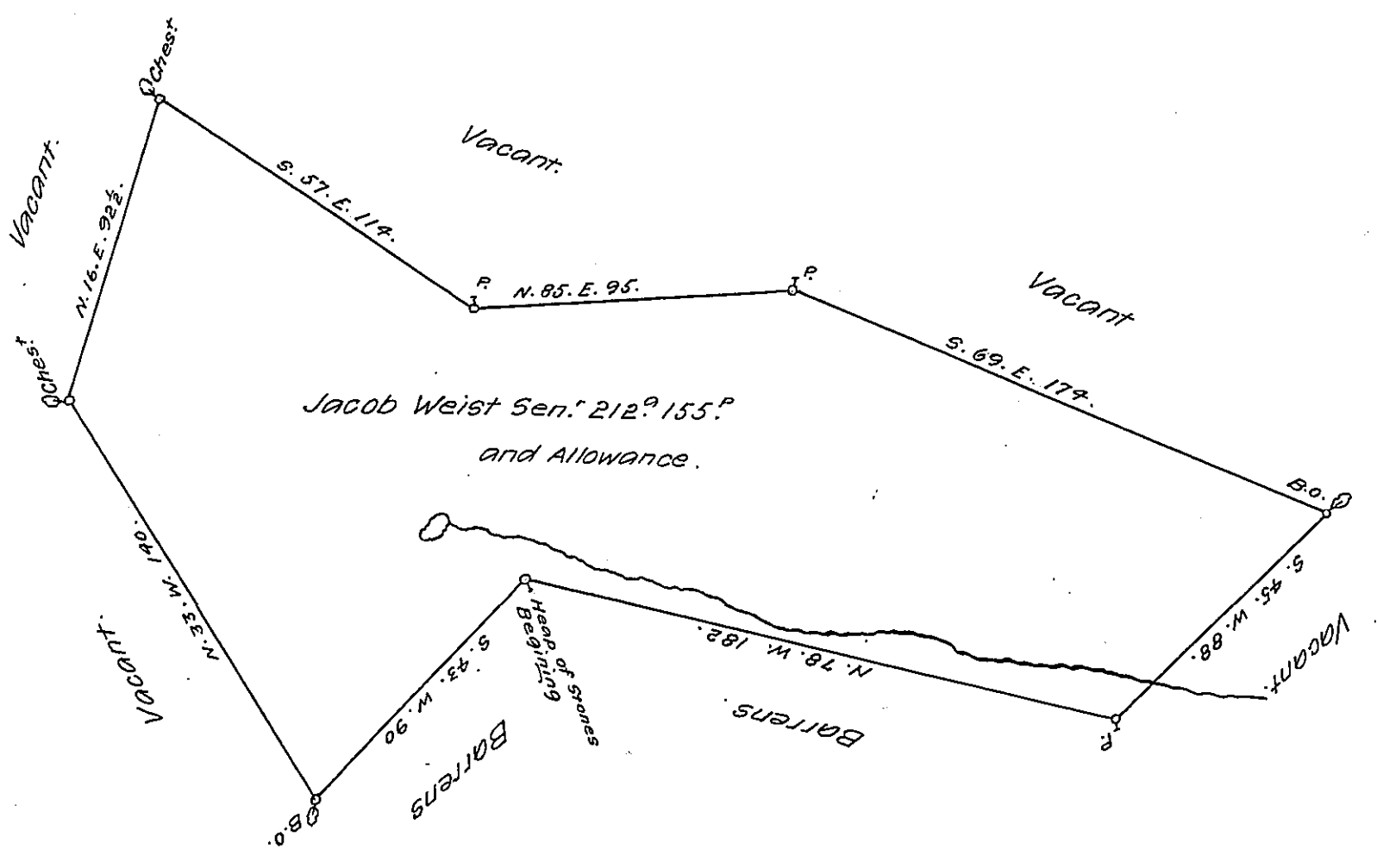


FORM NO 1.



A Draught of a tract of Land Situate in Shrewsberry township York  
 County Surveyed for Jacob Weist Sen. in pursuance of a Warrant for  
 160<sup>a</sup> dated the 8<sup>th</sup> day of October 1765. Surveyed the 19<sup>th</sup> day of the  
 3<sup>d</sup> m<sup>o</sup> 1766.

P<sup>r</sup> W<sup>m</sup> Matthews D.S.

To Jn<sup>o</sup> Lutens Esq<sup>r</sup> Surveyor Gen<sup>l</sup>

IN TESTIMONY that the above is a copy of the original remaining on file in  
 the Department of Internal Affairs of Pennsylvania, made  
 conformably to an Act of Assembly approved the 16th day of  
 February, 1833, I have hereunto set my Hand and caused  
 the Seal of said Department to be affixed at Harrisburg,  
 this seventh day of June 1907.

Henry Howell

Secretary of Internal Affairs.